

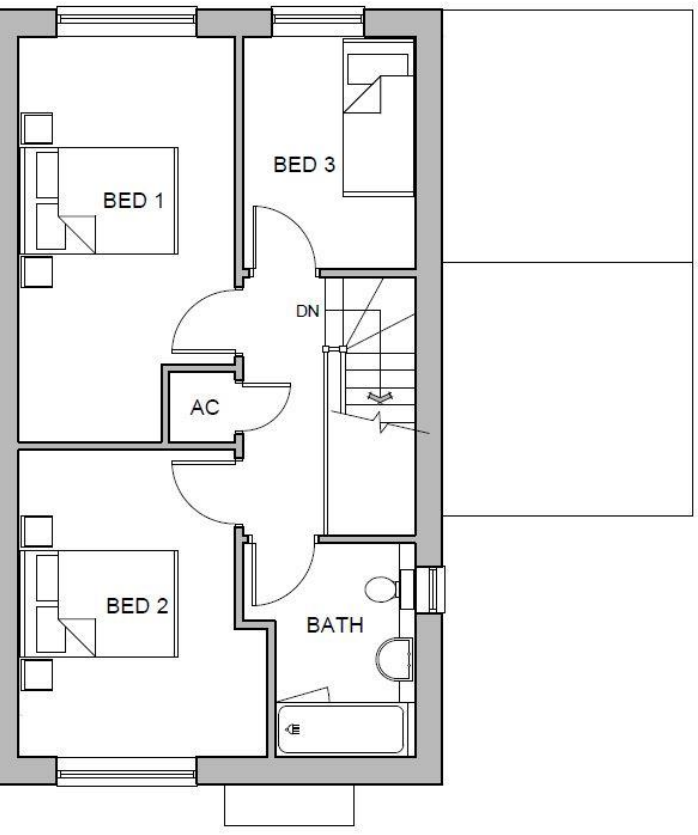
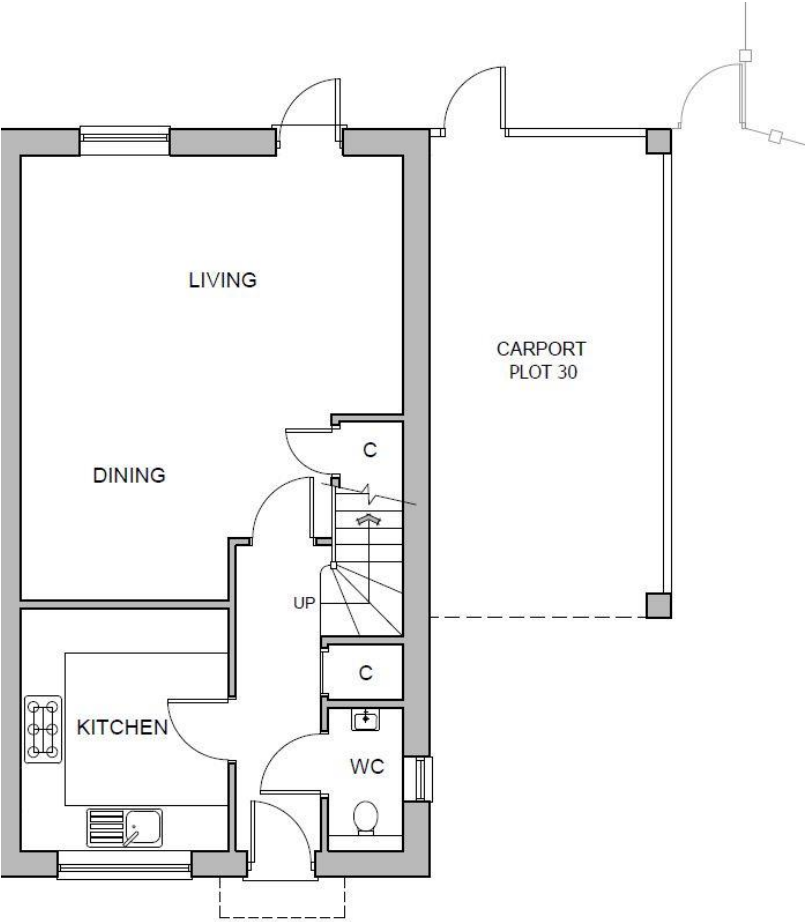
**5 Greenings Mead, Long Crendon, Bucks, HP18 9FU**











## Long Crendon

*Long Crendon is a charming village within Aylesbury Vale district in Buckinghamshire, about 3 miles west of Haddenham and 2 miles north-west of Thame in neighbouring Oxfordshire.*

*Long Crendon offers the best of both worlds. The beautiful Buckinghamshire countryside and picturesque properties give an air of tranquillity, but as residents will tell you, the place is teeming with activity.*

ONE remaining 3 bedroom new build house available for occupation NOW!

**SALES INCENTIVE: LEGAL FEES PAID UP TO £750 - LIMITED TIME ONLY!**

*To book a viewing please contact Bethan Coe on 01628 543 181 or [Bethan.Coe@housingsolutions.co.uk](mailto:Bethan.Coe@housingsolutions.co.uk)*

The property comprises of entrance hall with downstairs WC, living room with under stairs storage, kitchen with oven/hob and extractor, three bedrooms and family bathroom.

Outside offers large enclosed private garden with undercroft parking for two cars to the side of the property.

APPLICATIONS ARE BEING ACCEPTED ON A FIRST COME FIRST SERVE BASIS

Greenings Mead, Long Crendon, HP18 9FU						Example Share Values				
Plot	Postal No	Bedrooms	Property Type	Approx Unit Size m2	Price	Share Value 50%	Monthly Rent	Share Value 35%	Monthly Rent	Service Charge pcm (est)
30	5	3	End Terrace	93	£400,000	£200,000	£458.33	£140,000	£595.83	£40.00
31	3	2	Mid Terrace	75	£355,000	£177,500	£406.77	£124,250	£528.80	£40.00
32	1	3	End Terrace	93	£400,000	£200,000	£458.33	£140,000	£595.83	£40.00







